

Indicator & Button instruction

◆Bluetooth indicator:
Indicator light blue off:
Bluetooth not connected.
Indicator light blue steady:
Bluetooth connected.
Indicator light blue flashes:
Data update.

◆Power/Pause Button
◆Long press the button
for 5 seconds to restore
factory settings. The working
indicator light green flashes
rapidly 3 times.

◆Working Indicator:
Indicator light solid green:
The device is in operating status.
Indicator light solid red:
The device is not in operating
status.

Restore factory instruction

Long press the power/pause button for 5 seconds to restore factory settings, with the factory settings parameters being: the air pump defaults to running for 60 seconds and stopping for 200 seconds, and the time is set from Monday to Sunday, 08:00-22:00.

04

MAINTENANCE AND UPKEEP

Scent diffusers require regular cleaning and maintenance every 1-2 months when in normal use. Below is the method for cleaning.

① Spray nozzle cleaning:
◆Use 95% "alcohol + cotton swab" to gently wipe the nozzle, removing the residue of essential oil liquefaction.
◆Cleaning the atomizer core can be cleaned by soaking a cotton swab in 95% alcohol and wiping the core with it, or by soaking the atomizer core in alcohol and then allowing it to dry.
② Oil bottle cleaning:
◆Before changing essential oils each time, clean the oil bottle with alcohol and allow it to dry completely.

When equipment is not used for a long period, it is necessary to clean the internal nozzles and other components thoroughly.

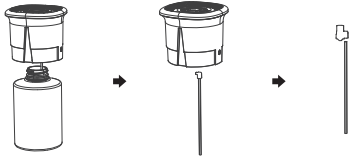
◆Add 95% industrial alcohol to the empty bottle.
◆Turn on the device and run it for 10-15 minutes.
◆Turn off the device, pour out the alcohol from the bottle and let it dry before reassembling the device.
◆Power off storage, unplug the power supply, to prevent electrostatic damage to the circuit.

05

05

REPLACE ATOMIZER CORE

The atomizer head assembly is divided into: atomizer head, essential oil bottle, oil suction tube, filter and atomizer core.
Operation steps: Unscrew the essential oil bottle first, pull out the suction tube, remove the old atomiser core with the clamping tool tweezers, replace the new atomiser core in it, and then assemble all the parts back to the device.
(Note: Press all components firmly to prevent detachment.)



06

CONCENTRATION & CONSUMPTION

Grade	Work time/s	Stop time/s	Consumption(g/h)
Minimum	5s	600s	0.07
Medium	100s	300s	2.25
Maximum	200s	20s	8.18
100% On Text	Fully Open	0	9.00

1. The above data is based on the test essential oil used: Park Hyatt (density ≈ 0.95).

2. The above data is for reference only, and the amount of atomization produced by different essential oils will be different.

06

!

SAFETY PRECAUTIONS FOR USE

Safe use:

①After loading the essential oil, the device must always remain upright and facing upwards, not inverted or tilted, otherwise it may damage the internal components of the device.
②During the transportation of the equipment, it is necessary to empty the essential oils from the bottles to avoid oil leakage and damage to the equipment.
③This device cannot be used for air humidification and cannot be filled with water;
④Please place it in a location inaccessible to children and pets.
⑤Store in a dry and cool place, do not use this device in high temperature or humid environments.

Forbidden:

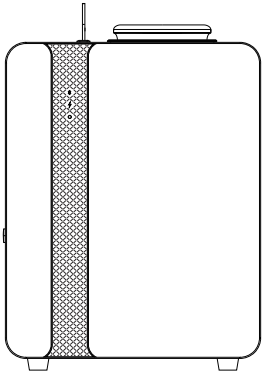
①Do not cover the equipment in use.
②Prohibit the use of overloaded power outlets, power cords, or damaged power plugs, as this may damage equipment or even cause fires.
③Essential oils should not be ingested and should be kept away from contact with the eyes. In case of eye contact, rinse thoroughly with plenty of water; if there is a strong sensation, seek medical attention immediately.
④Please do not disassemble the equipment. If any abnormalities are found in the product, please contact us promptly.

07

User Manual

ONE-TOUCH
SMART SCENT DIFFUSER

Scent machine



[Please read the manual carefully before use and keep it properly]

(M101 - Without LCD)

绘制	客户代码	物料名称	规格/mm	材质/工艺	版本/日期	审核	备注
设计部·冯		TW-M101说明书	280×110	四折页风琴折 157克铜版纸	2025. 08.12		

Please read and follow the instructions carefully. You may also scan the QR code below to view the operation video:



Scan the QR code to download the app



Equipment Operation Video



Equipment after-sales Video

PRODUCT INFORMATION

Size: 267x127x357mm	Weight: 4.4kg	Power: 9W
Input:DC 12V/2A	Capacity:500ml	Coverage:2000-3000m ³

PACKAGING ACCESSORIES

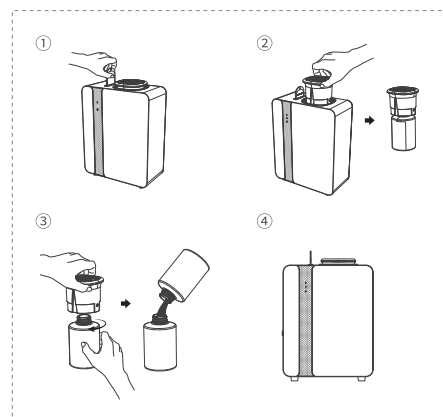
Scent Diffuser x 1 (Contains essential oil bottle)	Power adapter x 1	User Manual x 1	Magnetic Card x1	Backup rubber seal x 1
After-sales card x 1	Atomizer core x 1	Spanner x 1	Connector x 1	Small tube x 1

01

INSTALLATION INSTRUCTIONS

01

Use the magnetic card to unlock the atomizer head, then manually remove the entire atomizer head. Next, unscrew the essential oil bottle in the direction of the arrow, add an appropriate amount of essential oil, and reassemble all components into the device.

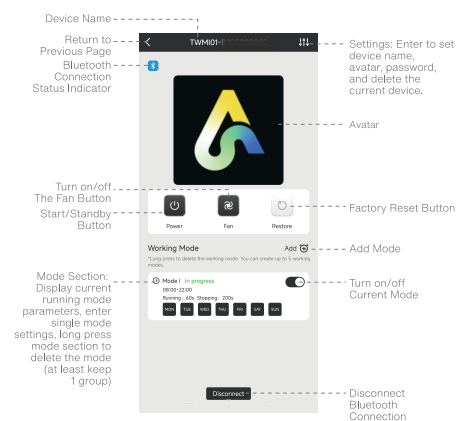


Warning: After loading essential oils, the device must always remain upright and facing upwards, not inverted or tilted, otherwise it may damage the internal components of the device.

02

APP CONTROL(BLUETOOTH MODE)

02



After Bluetooth connection, the device immediately switches to Bluetooth mode and operates according to the Bluetooth settings:
Scan the QR code with your phone to download and install the "Art Diffuser" APP → Run the APP → Select "Start Adding" → Go to the "Search and Connect" page, search for and connect to the device.
You can also click the "Scan" icon in the upper right corner to scan the Bluetooth QR code on the device to connect it.

Note: It is recommended to allow all APP permissions, including location services, Bluetooth connection, and sending notifications.

◆ **All devices** | Available devices within the phone's Bluetooth range are displayed in the "All Devices" group, click on any device icon to connect to that device, after successful connection, it will jump to the device details page.

◆ **My Devices** | Devices that have been connected are displayed in the "My Devices" group, devices not currently within Bluetooth range are shown in gray.

03

◆ Device Status Page

Switch: The mobile phone can turn on/off the device operation status with one press.

Fan: The mobile phone can turn on/off the fan with one press.

Reset: The phone can be reset to factory settings with a single button press.

◆ **Working Mode:** You can create 5 work modes, click on the mode window, and you can customize and edit the day of the week, time period, and frequency.

① **Day Setting:** Select the desired days

② **Time Period Setting:** Adjust the dial to select the working time period.

Note: If the time period needs to cross 00:00, it must be set as two consecutive time periods (the end time cannot be less than the start time), for example, 23:00~02:00, set as two groups: 23:00~23:59, 00:00~02:00.

③ **Frequency Setting:** Adjust the dial to select the working frequency.

Operating time range: 5~200 seconds; Pause time range: 20~600 seconds.

◆ More Settings:

① Change device name & avatar (this setting can only be saved locally on the phone)

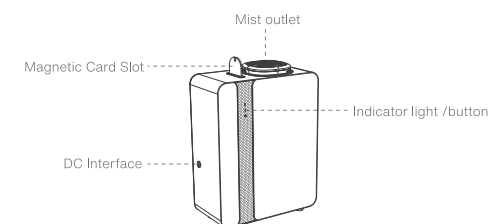
② Bluetooth password setting: Set a password for Bluetooth device connection.

Anyone connecting to the device next time will need to enter the password. If no password is required, click "No Password".

③ Delete Device: Disconnect the Bluetooth connection of the device and remove it from the history in the "My Devices" section.

INDICATOR LIGHT / BUTTON

03



04